

BUCKNELL NEWSLETTER

Spring 2019

No. 21

FREE ISSUE



600 copies of this self-funding community newsletter will be distributed throughout the parish of Bedstone and Bucknell and as widely as possible to surrounding towns and villages.

Open Morning Saturday 11th May

Come and join us, we're here for everyone

Meet the staff and tour the school. To book your place or find out more
email: admissions@bedstone.org

We look forward to seeing you



Save the date
Bedstone students dazzle in:
BUGSY MALONE
29/30 March | Tickets:
Bedstone College Reception
£5 adults | £3.50 concessions

An independent day and boarding school for boys and girls age 4 to 18



BEDSTONE

www.bedstone.org

01547 530961 | admissions@bedstone.org | www.bedstone.org

BUCKNELL NEWSLETTER

Spring 2019

From the Editor / Treasurer

Hello folks and welcome to the first edition for 2019. We at the Bucknell Newsletter wish you well for the New Year despite us being a quarter of the way through it already.

Please send in your local, seasonal pictures which you'd like to be considered for our front cover and you'll get a mention too and don't forget if you're organising or involved in a forthcoming event that you'd like to publicise for the period mid-June to mid-September in the next edition, then please let me have the details by mid-August before the Summer edition goes to print. That goes for articles too including anything for the Community News and Views section.

Our local business advertisement feature this quarter is for The Smithy Studio in Brampton Bryan and if you would similarly like to promote your business in this way, all it costs is the price of an advertisement and for that you get two pages all to yourself.

I've written a rather large article in this issue regarding threats of premature development to our green spaces, and because these threats are unlikely to go away, I would welcome other parishioners to voice their views or concerns too in future editions of the newsletter, anonymously if preferred.

Thank you to the advertisers as always who keep the newsletter afloat and if you would like to advertise as well, not just to promote your business but to support this community newsletter in the process, then details of advertisement sizes and prices can be found on page 38 of this edition. Best wishes.

Beverley - beverley2019@gmail.com or telephone 07484 280259

Index

4-5	What's Happening?	22	Recycling your latest newsletter
5	Advertised Services at a glance	25	Bucknell Allotment Association *
8-9	Advertisement feature *	25	Neighbourhood Watch
10	Rotary Club monthly reports *	25	West Mercia Police contact details *
14	Regular Dates *	26-27	The Revd. Annie Ballard *
 Community News & Views	Development threats in Bucknell	27	The Bucknell W.I. *
		28	Free Personal Ads.
		29-33	Business Cards
		37	Who's Who?
		38	The Bucknell Newsletter page
15-19	Development threats in Bucknell		
19	Taking Pride in Bucknell *		
20	Global Warming *		
21	Pop-in Café donations *		

* Indicates contributors' articles. Front cover: Bluebells in Bucknell Wood courtesy of Sue Rowan



What's Happening?

"Please keep me informed of forthcoming events so that I can include them here in future editions".

Bucknell	
Saturday 9th March	Llanfair Singers are giving a concert at 7:30pm. in St. Marys' Church, Bucknell. Varied programme followed by a supper. £8.00 admission.
Saturday 16th March	The Sultana Brothers are back for another night of the songs and hits you love. Venue: Bucknell Memorial Hall. Tickets: £10 on the night, £9 in advance, £5 for children. Licenced bar. All profits to Bucknell charities. Contact: Roger Bates on 01547 530062
Saturday 4th May to Monday 6th May 11:00- 17:00	Local art group Abstract Edge will be showing their work in Bucknell Church on the first weekend of May to correspond with The Marches Makers in Kington. This will make for a wonderful opportunity to visit Bucknell to see paintings by local artists. Enquiries: Contact Roger Percival 01547 530 040 for more information or abstractedge.org
Wednesday 10th April	Bucknell Memorial Hall - 7:30pm. Prize bingo in aid of hall funds.
Sunday 21st April	Bucknell Memorial Hall - Easter Egg Hunt in aid of hall funds starting from the Bucknell Memorial Hall at 2.00pm.
~ ~ See also pages 26 & 27 for some 'special' church service dates and times ~ ~	

Knucklas Ladies Guild	
3rd Tuesday of every month at 7:30pm. Generally talks with Tea / Coffee / Raffle	
March	Outing to Llandovery: Day trip by train on the Heart of Wales line.
April	Aardvark Books: An evening trip to browse the books and enjoy tea and biscuits.
May	Chocolate demonstration
June	Fox Glass
July	Outing to Lavender Fields
August	Samaritans
September	Tai Chi
October	Curry demonstration
November	Xmas wreath making
December	Christmas lunch - venue TBC
Community Centre Main Hall, Glyndwr, Knucklas, Knighton, Powys LD7 1RR Contact Maggie 01547 528358 or Margaret 01547 529155 for details	
New and non-members always welcome. NB. Talk subjects can change without notice.	

Bedstone and Hopton Castle Village Hall

**1st to 17th
March**

We will be taking part in the **2019 Borderlines Film Festival** so look out for posters for details or email bedstonehoptoncastlelh@hotmail.co.uk to go on our mailing list.

Times and additional information from: Marge Savery on (01547) 530 282

Advertised Services at a glance with page nos.

Schooling	2 & 40
Legal services / Hair and beauty	6
Home care / Domestic appliances and Calor gas stockist	7
The Smithy Studio (Advertisement feature)	8-9
Memorials and monumental supplies / Specialist tree surgery	11
Pony trekking and self-catering caravan holidays	12
Funeral services / Tree care	13
Electrician	21
Garden and home maintenance	22
Building & renovation work / Computer servicing and repairs	23
Guttering and pathway cleaning, garden maintenance / Soft furnishings and alterations	24
Personal advertisements / Bookery, café, exhibitions and family events	28
Cattery / Furniture restoration and Upcycling / Chiropody	29
Mechanical equipment services / Dog grooming / Curtains, blinds and alterations	30
Car repairs / Vehicle hire / Home furnishings restoration and repairs	31
Plumbing and heating / Cycles sales, repairs & accessories / Unisex hairdressing	32
Foot care / General property maintenance / Garage and shop	33
Bar, restaurant and accommodation	34
General builder / Commercial property letting	35
Foot health / Domestic heating oil	36
Self-catering accommodation in Bucknell / Graphic design and printing	39

Advertising in the Bucknell Newsletter

Need an advertisement for the Bucknell Newsletter but don't have the time, resources or know-how to produce one? From just £20.00 we can design a professional advertisement to suit your requirements. For further information please contact **Stacie** via info@sjconsultancy.co.uk

DIXON LEWIS SOLICITORS

Unit 2, The Craven Centre,
Craven Arms SY7 9PY

Telephone: 01588 672399

For wills, probate, property and family matters

Authorised and Regulated by the Solicitors Regulation Authority

Richard's
HAIR & BEAUTY



20% Discount for New customers, with a further 10% discount if you re-book

The Square, Clun Open Monday to Saturday 01588 640300
email - richardshairstylists@gmail.com www.richardshairstylists.co.uk





SunCare

SunCare Home Care provides care in the beautiful countryside of Hereford, Shropshire and Powys.

Registered as NHS 'Dignity Champions' and rated at GOOD by The Care Quality Commission. We offer a personalised service supporting people with the same respect you would want for yourself or a member of your family.

Our highly trained support workers can assist you with:

- Personal care
- Meal preparation
- Shopping
- Prescription collection
- Washing and dressing
- Respite care
- Medication
- Housework and laundry

All staff enhanced criminal records checked



Registered Manager: Carole Barnes RGN

Manager: Karen Darby

SunCare Home Care Limited, 3 Bron Offices,
Brampton Bryan, Shropshire SY7 0DH

Telephone: 01547 530633

Email: enquiries@suncarehomecare.co.uk

Website: www.suncarehomecare.co.uk

A & B Smith Domestic Appliances

Craven Arms Business Park, Long Lane, Craven Arms SY7 8NU



- Same / Next Day delivery where possible
- 200+ Appliances on display, ready to go
- Stellar cookware stockists



On live display

Cooking demonstrations coming soon

South Shropshire's leading Calor Gas stockist

- All cylinder sizes stocked and regular deliveries throughout the area.
- Coal, netted logs & bagged kindling

T: 01588 673647

W: www.absmith.co.uk



Sue Kelsall - The Smithy Studio



Sue has a Fine Art Degree with Art History, from the University of Wales, Swansea. Working for many years in adult education, Sue has been involved in community education and was a practicing and exhibiting artist.



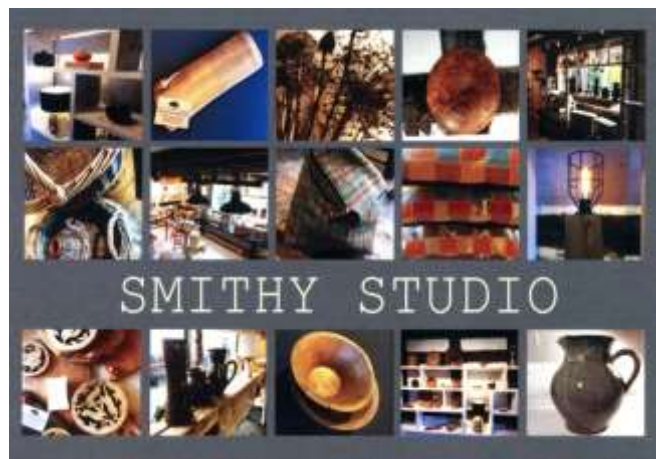
The Smithy Studio is located adjacent to the A4113 in Brampton Bryan alongside the premises of Forge Hair and re-opens for business on 30th March 2019.

Q & A with Sue

When was the business started? The Smithy Studio opened its doors at Easter 2018 after three months of intensely chilly refurbishment. It was a labour of love with a touch of madness.

Why did you set up the business? The old forge was just waiting to become a rural gallery where I could showcase the works of very talented local artists and crafts people, of which there are many in the locality. When we first occupied the old forge it was cold, dark, damp and unloved. I was given the opportunity to breathe new life into the space and set about installing a wood burning stove, wall to wall carpeting, furniture and ambient lighting to enhance the goods for display.

Where are you based? The old Blacksmiths forge is located in Brampton Bryan on part of the Harley Estate which is in itself home to a variety of artists and makers.



**Brampton Bryan
Bucknell
Shropshire
SY7 0DH**

**Open: Friday,
Saturday & Sunday
and Bank Holiday
Mondays**

**11am - 4pm
April to December**

We're also online at www.thesmithystudio.co.uk and on



Do you have any ambitions to grow the business or move premises? I want to become part of the local community and be recognised as a shop where you can find something unique while feeling relaxed enough to browse the much varied selection of locally made crafts, design-led homewares and wonderful paintings.

What is most important to you running the Smithy Studio? Firstly, is to always open on time and stay open until closing time, consistency is everything. Secondly, to chat with every visitor to make them feel welcome and they will then no doubt tell others of the shop and its wares. There is nothing like word of mouth.

Who is your ideal customer? The ones that relax on the Smithy Studio sofa and have time to chat and browse the quirky items that we have for sale. Our stock of beautifully handcrafted items and paintings is a feast for the eyes.

What is the greatest achievement for your business? Transforming an unloved space into a warm and welcoming Aladdin's cave brimming with goodies. Meeting some amazing people, not just the local craftsmen and women, but visitors to Brampton Bryan which included some soggy cyclists on their way from John O'Groats to Lands' End, Queen Victoria look-alikes who work with children, psychotherapists, healers, and holiday makers to name but a few. Folk from as far away as New Zealand, the United States and Russia.

Who are the local crafts people that you know? Danielle Flowers - jewellery, Dave Mullin - ceramics, Pete Smith - blacksmith, Lottie O'Leary - stone carver, Hannah Davis - bespoke tweed, Samuel Bebb - painter, Howard Lewis - artist in wood, to name but some. There are so many wonderfully talented people in the locality.

What has been the biggest help to building your business? My tenacity and the support of friends and the local crafts people - a big thank you to all of them.

Have any hidden talents come to light since starting the business? Having a Fine Arts degree and design background proves to be really useful when explaining the skills involved in the making of the items for sale. For me it is crucial that prospective purchasers have the 'story' of just how much work goes into the making of the finished product. We live in a throw-away society and it is important to me that I can explain the value of a hand-crafted item.

What goals do you have for your business in the future? To share the shop with some of the artists and crafts people so that I can have an occasional weekend off, and for the shop to become the go-to-gallery for that special and unique 'something', and to continue to establish new links with other makers and to help promote new talent.

What have you done today to make you feel proud? It is so satisfying when visitors compliment the space and say how they love to pop in to browse and see what's new.

MODERN, RUSTIC AND HANDMADE HOMEWARES

If you are looking for an unusual and unique gift or maybe that special something for the home, then please get in touch with Sue via mobile phone on **07811 042 478** or via email at **thesmithystudio@gmail.com**, Instagram: **smithy_studio**, Facebook: **Smithystudio** or why not pop in if you can for a browse and a friendly chat.

Shop re-opens on 30th March 2019.

Editor - December 2018



Monthly Reports for 2018 - 2019 by Cathy Jones

NOVEMBER was another busy month with some fundraising and charitable donations made. The first Wednesday meeting in the month was our usual discussion of past and future events as well as charities we wish to support. The following week we held an enjoyable supper and quiz at The Baron in Bucknell and welcomed our Friends of Rotary who helped us raise nearly £200 for the Breast Cancer Haven in Hereford. This sum was added to money already raised for the charity this year, and we were delighted the following week (through "The Big Give") to double our donation to £1200. At the end of the month we welcomed nurse Heather Lewis from the Lullaby Trust as a speaker at a meeting we held at the Farmers Inn in Presteigne. Heather told us about the work the charity does for parents who lose children to SIDS (cot death) and her work with those who are having another child. Very moving talk. If you are moved and want to find out more about what we do please or wish to get involved please see our contact details below.

DECEMBER was as usual another busy month, combining social events with fundraising and charity donations to good causes. Early in the month we attended the Churches Together Pensioners Christmas Lunch in Knighton where we donated £250 for gifts to the older residents attending the meal and in the middle of the month we held two Christmas collections at the Co-op in Knighton. We were very well supported by those people shopping there, and we raised over £420 to be divided largely between the East Radnorshire Day Centre in Presteigne and the Knighton Food Bank, with the remainder going to Rotary-supported local good causes. We also held a "Frugal Supper", in place of one of our regular meetings, at Gallery House in Leintwardine raising nearly £200 for our charitable efforts in the community. Many thanks to everyone who has supported us this month – it is very much appreciated. See our contact details below if you'd like to get involved.

JANUARY was an enjoyably busy month, as it always seems to be, with a mixture of fundraising and social events. The month started off with a Twelfth Night supper at the Judges Lodgings in Presteigne. It was an interesting evening, eating supper by candlelight while raising money for this newly established charity. The following Wednesday we had a frugal lunch hosted by two of our members in Knighton which raised over £170 for our charitable efforts in the community. We then had a two more meetings, a lunch at our new venue, the Farmers Arms in Presteigne and an evening at our normal venue, the Baron in Bucknell. You can see all our meeting and fundraising dates and our venues on our website "Knighton Rotary Club". And remember that members pay for the running of the club and for social events so that all money we raise goes to the charities and good causes we support.

Please remember that all the money we raise goes to our chosen charities as our running costs are covered by a membership fee. You can read more on our website "Knighton Rotary" and on twitter @knightonrotary. If you would like to get involved in our social and fundraising activities, as well as make new friends, you are very welcome to come to any of our Wednesday meetings. For more details please contact members Norman Thorp 01547 529666, Cathy Jones 07813 733240 or search for "Knighton Rotary Club" on Google, Facebook and Twitter.

STRETTON MEMORIALS

CHURCH STRETTON

Tel: 01694 724448

- Favourably priced
- Distance no object
- Cleaning & Renovations
- Additional inscriptions
- Memorials & Monumental Specialists
- Headstones, Cremation tablets and Kerb sets



Web: www.strettonmemorials.co.uk
Email: enquiries@strettonmemorials.co.uk

Tree Active

Specialist Tree Surgery

Liam O'Brian
Fully qualified & insured

Branch line: 01588 671044
Mobile: 07528 752679
Email: liam@treeactive.co.uk

www.treeactive.co.uk



COME AND HAVE SOME FUN AT DARKY DALE FOREST STABLES, LOTS OF BEAUTIFUL HORSES OF ALL SIZES TO SUIT **ALL AGES** AND ABILITIES. WE HAVE DIRECT ACCESS INTO THE FOREST ALLOWING MILES OF OFF-ROAD SAFE RIDING

-
- | | |
|---|-------------------------|
| • TREKKING U INSTRUCTION | WE NOW CAN TAKE |
| • PUB RIDES U PICNIC RIDES | CHILDREN UNDER |
| • CORPORATE U SCHOOL GROUPS | THE AGE OF 4 |
| • FULL LIVERY U HOLIDAY LIVERY | AND OFFER BASKET |
| • SELF CATERING CARAVAN HOLIDAYS | SADDLE RIDES |
| • CHILDRENS BIRTHDAY PARTIES U 'OWN A PONY'DAYS | |



ADVANCE BOOKINGS ONLY - PHONE: 01547 530060
9am. and 6pm. or message us on our Facebook page.

Website: www.darky-dale-forest-stables.co.uk
Bedstone SY7 0BL

GEOFF HALL FUNERALS



All funerals personally conducted
24 hour service • Enquiries from all areas welcome
Private Chapel of Rest • Pre-paid funeral plans available

Telephone 01547 528554

Email: info@geoffhallfunerals.co.uk

www.geoffhallfunerals.co.uk



Wylcwm Close • Knighton • Powys LD7 1AA

NICKY TRANTER



Tree Care
Tree Climbing Specialist

Fully Qualified and Insured

For a free quotation please call:

01547 520075

or email: nickytrantertreecare@mail.com

REGULAR DATES

	Days	Event	Venue & Time	Contact
WEEKLY	Monday	Bedstone Art Group	Bedstone Village Hall 10:30 - 13:00	Celia Keane 01547 530397
	Tuesday	Mothers' and Toddlers' Group	Bucknell Memorial Hall 09:00 - 11:30	Leanne Lewis 07869 470684
	Tuesday	Bucknell Ukulele Group	Variable venues at 14:30	Geri Jackson 01547 530137
	Tuesday	PiYo Club	St. Marys School Hall 19:30 - 20:10	Helen Bithell 07775 520968
	Tuesday	Grumpy Old Men's Club	The Baron at Bucknell 21:00 - 23:00	Just turn up!
	Wednesday	Pop In Café Bucknell	St. Marys Church 10:30 - 12:00	Sue Fenlon 01547 530105
	Friday	Modern Line Dancing	Bucknell Memorial Hall 09:30 - 10:30	Christine Price 01547 530249
	Friday	Bingo	Bucknell Memorial Hall 19:45	Dorothy Edwards 01547 530252
	Saturday	Indoor Circuit Training	Bucknell Memorial Hall 09:30	Helen Bithell 07775 520968
FORTNIGHTLY	Monday	Bucknell Walkers	Lych Gate St. Marys Church 09:00 - sharp!	Mike Starr 01547 530179
	Wednesday	Mobile Library Service	Belmont Garage end of the Causeway 14:05 - 14:25	Shropshire Library Service 01743 255024
	Thursday	Skittles (Sept - May) Boules (June - Aug)	Memorial Hall or The Baron at Bucknell 19:30	Sylvia & Derek Meredith 01547 530422
MONTHLY	Last Monday	Bucknell Book Group	Variable venues	Bridget Thomas 01568 770165
	First Tuesday	Mothers Union	Variable venues during winter months	Iris Greaves 01547 530152 and Jean Pryke 01547 540376
	Second Tuesday	Bedstone and Bucknell Parish Council	Variable venues - see parish notice boards 19:30	Jonathan Kemp Chairman 01547 530398
	Third Wednesday	Women's Institute	Bucknell Memorial Hall	Christine Price WI President 01547 530249
	Last Wednesday	Craft Group	Variable venues	Fran Turnbull 01547 530833



Development Threats to Green Spaces in Bucknell

What's going on? This is just my view.

For those of you who use the village Facebook pages, you will have seen postings by Brian Willson and myself regarding the Local Plan Review Consultation Document issued by Shropshire Council requesting feedback from the people of the parish relating to land they've considered for additional housing development in Bucknell village, for the period 2016-2036. Unfortunately, their online Consultation Document wasn't issued in time for mentioning within the Winter edition of the Bucknell Newsletter, which is why Brian Willson and I have tried to raise awareness of its existence using Facebook so that at least the online parishioners could submit their views to Shropshire Council by the closing date of 8th February 2019.

It would seem that a number of green spaces may have been offered by land owners during a recent Strategic Land Availability Assessment (SLAA) organised by Shropshire Council, for consideration for potential development and they are listed in the table on page 17. My concern is that if any green field is allowed to be developed before that of the existing brownfield site, (comprising the timber yard, railway siding and adjacent land), then that could set a precedent for some other owners of green fields in and around Bucknell to apply to have their land considered for development too.

This has all come as a bit of a shock because it again suggests that no green spaces in or around Bucknell are safe from the threat of development despite the 'warm' words from Mr. Nutting, the Leader of Shropshire Council, at a Parish Council meeting on 11th September 2018, where he advised us that Shropshire Council will listen to the people. Shropshire Council have again designated a field to the east of the village (BKL008a) as a 'Preferred Site' for 20 dwellings despite it being **outside** the village development boundary. Here's an extract from the notice of REFUSAL for a previous Planning Application 16/04933/OUT for this field dated 9th March 2017:

Shropshire Council hereby REFUSE OUTLINE PLANNING PERMISSION for the reasons outlined below.

1. The proposed site lies in open countryside outside the development boundary for Bucknell as defined on the Policies Map of the adopted Sites Assessment and Management of Development (SAMDev) Plan. The development strategy for the village is set out in Settlement Policy S.2.2 (i) and states that all new development will take place on allocated or sustainable windfall sites located within the defined development boundary for the village. As a result the proposal is contrary to the development plan for the area. The Local Planning Authority has determined that the principal housing needs of the village should be met on a 'previously developed' site that is allocated for development in the SAMDev Plan together with modest windfall development within the defined settlement development boundary. The development of a 'greenfield' site beyond the development boundary in advance of an allocated 'brownfield' site would be contrary to the Core Principles of the National Planning Policy Framework. There are considered to be no material considerations that outweigh the provisions of the development plan in this instance. The proposal thereby fails to accord with Policies CS1, CS4, CS5 and CS17 of the Shropshire Local Development Framework Adopted Core Strategy, Policies MD1, MD3, MD7a and S2.2 (i): Bucknell of the adopted SAMDev Plan.

Ian Kilby Development Manager

Date of Decision: 9th March 2017

So now Shropshire Council want to extend the Development Boundary to include part of this field. They are clearly not listening to the people of Bucknell who have repeatedly objected in the past to this field being developed and that has been upheld by it being refused Planning Permission many times before on several grounds including identifying Central Government Policy, the National Planning Policy Framework (NPPF), which encourages in my view, brownfield sites to be given priority for development before green field sites wherever possible.

A relevant extract from the NPPF says:

9. Protecting Green Belt land

Item 79. The Government attaches great importance to Green Belts. The fundamental aim of Green Belt policy is to prevent urban sprawl by keeping land permanently open; the essential characteristics of Green Belts are their openness and their permanence.

Item 80. Green Belt serves five purposes:

- *to check the unrestricted sprawl of large built-up areas;*
- *to prevent neighbouring towns merging into one another;*
- *to assist in safeguarding the countryside from encroachment;*
- *to preserve the setting and special character of historic towns; and*
- *to assist in urban regeneration, by encouraging the recycling of derelict and other urban land.*

The Ministerial Forward in the NPPF Guidance document signed by the Rt. Hon. Greg Clark MP, former Minister for Planning says:

Our natural environment is essential to our wellbeing, and it can be better looked after than it has been. Habitats that have been degraded can be restored. Species that have been isolated can be reconnected. Green Belt land that has been depleted of diversity can be refilled by nature – and opened to people to experience it, to the benefit of body and soul.

Our historic environment – buildings, landscapes, towns and villages – can better be cherished if their spirit of place thrives, rather than withers. Our standards of design can be so much higher. We are a nation renowned worldwide for creative excellence, yet, at home, confidence in development itself has been eroded by the too frequent experience of mediocrity.

So sustainable development is about positive growth – making economic, environmental and social progress for this and future generations. The planning system is about helping to make this happen. Development that is sustainable should go ahead, without delay – a presumption in favour of sustainable development that is the basis for every plan, and every decision. This framework sets out clearly what could make a proposed plan or development unsustainable. In order to fulfil its purpose of helping achieve sustainable development, planning must not simply be about scrutiny. Planning must be a creative exercise in finding ways to enhance and improve the places in which we live our lives. This should be a collective enterprise. Yet, in recent years, planning has tended to exclude, rather than to include, people and communities.

In part, this has been a result of targets being imposed, and decisions taken, by bodies remote from them. Dismantling the unaccountable regional apparatus and introducing neighbourhood planning addresses this. In part, people have been put off from getting involved because planning policy itself has become so elaborate and forbidding – the preserve of specialists, rather than people in communities. This National Planning Policy Framework changes that. By replacing over a thousand pages of national policy with around fifty, written simply and clearly, we are allowing people and communities back into planning. -- Rt. Hon. Greg Clark MP, Minister for Planning.

I strongly objected to the proposed development of the field to the west of Tyndings a while back, not because I live nearby, I do not, but I know that if **any** green field is developed ahead of the timber yard site then that could set a precedent for further green field developments to be successfully applied for.

Areas of land that Shropshire Council recently considered for development potential within Bucknell are listed within the latest Consultation Document as these:

ID	Location	Status
BKL001	Field opposite the Junior School	Currently suitable / available
BKL002	The Old Farm	Currently suitable / available
BKL003	Land at Hill Farm	Not currently suitable or available
BKL004	Grazing land in the village centre	Currently suitable / available
BKL005	Land west of Tyndings	Not currently suitable but future potential
BKL008	Land adj. Redlake Meadow (1.96 Ha)	Not currently suitable but future potential
BKL008a	Land adj. Redlake Meadow (0.85 Ha)	Not currently suitable but future potential
BKL009	Land south of Bridgend Lane	Not currently suitable but future potential
BKL010	Land adjoining Ladywell,	Not currently suitable but future potential
BKL011	Timber yard / Station yard	Not currently suitable but future potential

The latest Consultation Document also refers to Bucknell as a **town**!!

Development Strategy

5.24. Over the period to 2036, a nominal increase in housing is being encouraged in Bucknell to support the role of the **town** as a Community Hub and to sustain its function as an important local service centre for other settlements situated around the south Shropshire border.

5.25. The provision of an additional 20 dwellings is proposed through the allocation of the northern portion of land at Redlake Meadow (BKL008a) that is accessed directly from the B4367 through the village. The development scheme for BKL008a should recognise the significant location of the site on the edge of the village. BKL008a lies on the eastern edge of Bucknell and is situated close to (but beyond) the Shropshire AONB and would be visible from the elevated land within the AONB to the north. The potential impacts of the proposed development on the AONB (north) and the countryside (east and south) will require a good contemporary design with suitable layout and landscaping schemes. These objectives will, however, need to be balanced with the requirement for a suitable and safe access with appropriate visibility splays, from the B4367 on the northern boundary. The site is currently in agricultural use but is largely undisturbed at its margins and the land south of the preferred allocation forms part of the floodplain to the River Redlake. An ecological assessment of the site will be required to investigate the potential for priority habitats and protected species and to identify possible mitigation measures within an appropriate development scheme. A Habitat Regulations Assessment (HRA) will also be required which should include an assessment of the water quality impacts on the River Clun Special Area of Conservation (SAC).

5.26. *The site will also require significant infrastructure investments to accommodate this proposed housing and to create a new residential environment of significant character that meets the local housing needs for high quality, affordable housing across a range of tenures.*

In the table below, Shropshire Council (SC) are justifying the development of a green field by ignoring the 'windfall' developments in Bucknell since 2006. As I understand it, when Bucknell agreed to become a Community Hub, it was then assured by SC that Bucknell would have greater control over development within the village as a Community Hub than it would if it wasn't a Community Hub, so the Parish Council at the time ticked a box for the building of 50-100 dwellings during the 20-year period 2006-2026 which would include 'windfall' (ad hoc minor building) developments to count as well. Approximately 15-20 'windfall' properties are understood to have been built since 2006. But SC have now moved the 'goal posts' and are ignoring the 'windfall' developments built since 2006 and are instead declaring a new 20-year period 2016-2036 and stating, in the table below, that there are currently **no** windfall properties to be considered and that to reach their target of 100 new dwellings, 20 must be built on the green field labelled BKL008a. See map on page 19.

Note the word 'requirements' below. Whatever happened to what the community wants?

Summary of residential requirements.

	<i>Number of Dwellings</i>
<i>Preferred dwelling guideline 2016-2036</i>	<i>100</i>
<i>Dwellings completed in 2016-17 *</i>	<i>0</i>
<i>Dwellings committed as at 31st March 2017 *</i>	<i>75</i>
<i>Dwellings to be allocated</i>	<i>25</i>
<i>Remaining dwelling requirement to be identified</i>	<i>20</i>
<i>Balance / Windfall allowance **</i>	<i>5</i>

** Analysis of Housing Supply as at 31st March 2018 will be provided towards the end of 2018.*

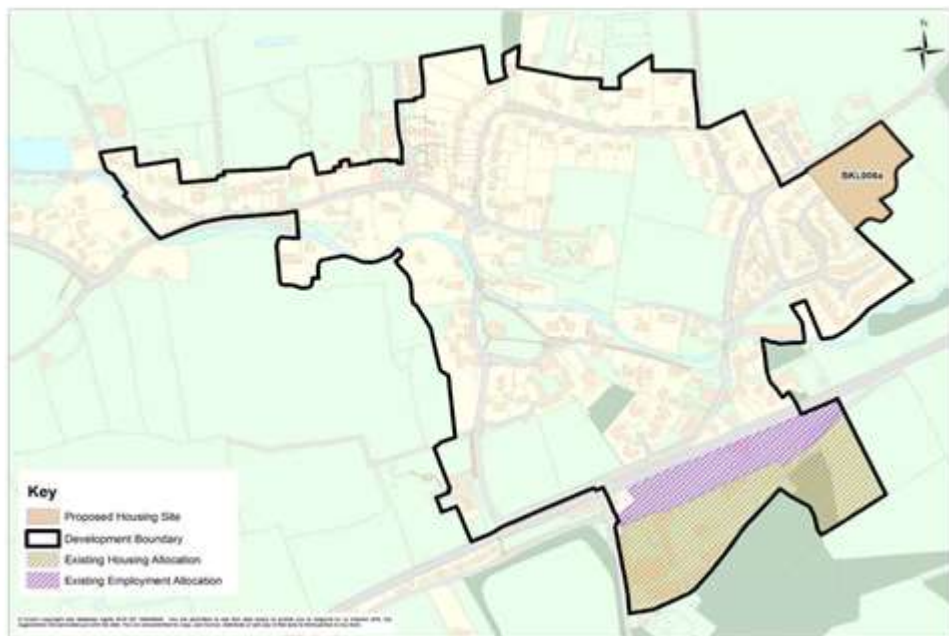
*** Local Plan policies will allow flexibility for appropriate windfall, rural exception and cross-subsidy development.*

This is a matter that everybody living in Bucknell should be aware of and have their say in. I consider it essential that the brownfield site BKL011 should be developed first before any green areas are permanently desecrated, to see what impact 70+ new properties on that site has on the quality of village life and its infrastructure and before any other significant developments are even considered. This I made clear to Peter Nutting at the aforementioned Parish Council meeting that he attended and again in a lengthy letter to him personally on 16th December 2018 advising him also of my disgust at the way SC are designating a green field as a 'Preferred Site' for potential development just, in my view, to 'make up the numbers' and not because the village necessarily needs them.

What was it Greg Clark MP said? *...we are allowing people and communities back into planning.*

If you would like to be a part of an **Action Group** where we can meet up when necessary to discuss threats of inappropriate development and collectively object to them, then please contact me at beverley2019@gmail.com or telephone 07484 280 259.

Editor- 8th February 2019



Taking a pride in Bucknell



Mike Starr is the Litter-pick Co-ordinator for Bucknell and three members of his team recently did a clean sweep of the village. They concentrated on the worst affected areas which are the B4367 that passes through the village from the Ludlow Road junction via Bucknell Nursery and along part of the Bedstone Road and part of Chapel Lawn Road that starts at the level-crossing and runs through the village. At least 8 full bags of rubbish were collected including plastic wrappers, cans, glass and plastic bottles, a discarded tyre and other vehicle parts, a couple of lengths of plastic pipe and some cabling, some of which can be seen in the photo. The combined efforts of Bucknell Litter pickers produced quite a haul of waste that had been carelessly discarded.

If you would like to help keep Bucknell tidy, please ring Mike Starr on 01547 530179.

Litter picking gadgets and refuse bags are supplied.



Collin Cummings - 1st February 2019

Global Warming



Global Warming - well, that's it, isn't it? The hint is in the name, "Global". It's a problem that's easy to think no one person can do anything about. It's up to the politicians to deal with it! Well, are you sure about that?

I remember in the 1960's, seeing tucked away in the centre pages of my newspaper, a small mention of something called 'Global Warming' and thinking if that's true, then why isn't it taking centre-stage? It has finally got to centre-stage but it's taken fifty years to get there.

It can take three generations before action gets taken and social change happens. For example, in the 1950's it was recognised that smoking caused lung cancer, one generation to be sceptical, the second to accept the truth and the third generation to take action.

Global Warming is not like deciding whether to smoke or not, a decision that mostly affects only us personally. There are many other examples of the wider difference that can be made once a social movement is started and more and more people take action, such as wearing seat belts, health improvements, use of pesticides, sexism, racism etc.

If the population of Bucknell is around 800 as suggested in the 2016 Parish Plan survey, the environment was high on the list of peoples' priorities. Many live here because of that environment. If each of us 800 did just one small thing, it would be a start, a contribution.

The list is long, drive a mile or two less, drive a mile or two more slowly, grow something to eat instead of buying, reduce food miles, try to save a Kilowatt of energy here and there. Take one less flight, use public transport, buy less 'stuff'. Do you really need a new phone? New shoes? New curtains? All these choices would not only save some carbon but would save money too.

On the way it can be a challenge. If you have internet access, go to Carbonfootprint.com and find out what your 'footprint' is on the earth, with advice on how to reduce it. There are other carbon calculator sites, as well as some for calculating food miles.

Best Kept Village? How about Most Carbon Friendly Village? Try making some contributions towards preserving the environment that we all value so much. Start a national movement or online campaign!



Pop-in Café Donations



The Pop in Café had another good year in 2018 improving the profits by 6% on 2017's figures. The committee have therefore made the following donations:

1. St. Mary's School £500 - to help purchase a pirate ship for outside play and growth activities.
2. St. Mary's church £200 - to purchase a replacement Hoover.
3. Memorial Hall £400 - to help towards purchase of a new kitchen which is to be installed once the plumbers have finished supplying hot water to the hall.
4. Bucknell Youth Club £300 - to purchase photographic equipment to teach the children composition, light, structure and arrangement when taking photographs.

We have a small sum left over in case there are any other village activities which require support in the coming months.

Needless to say I owe a huge debt of gratitude to the wonderful ladies who donate their time, money and baking skills each week and a very big thank you to our friends who come week after week for their coffee, cake and blether.

Sue Fenlon - Treasurer - 21st January 2019



Email boxallselectrician@outlook.com

Call **07971823017**
01588 660136



Visit us at : www.boxallselectrician.co.uk

Phillip Hatfield

Garden and home maintenance

- Lawn mowing
- Hedge cutting
- Hedge laying
- Fencing

and odd jobs around the garden or home

NO JOB TOO SMALL



Telephone:

Daytime: 07814 836 446

Evenings: 01568 770 817

RECYCLING YOUR SPRING 2019 BUCKNELL NEWSLETTER

If you've read your **latest** copy of the newsletter and **do not** wish to keep it, please recycle it by either passing it on to a friend or relative who's not a resident of the parish, or return it to me so that I can redistribute it to a neighbouring town or village for others to read. Just leave it at Belmont Garage and I will collect it from there.



Do you live in the parish but aren't getting your copy? Spare copies are usually available either at Belmont Garage or St. Marys' Church Bucknell, or contact the editor.

A P SALE

Building & Renovation Ltd.



*Carpentry ♦ Stonework
Roofing ♦ Brickwork ♦ Dampproofing
Timber Treatments*

17 Blashfield Road, Ludlow, Shropshire SY8 1UE

T: 01584 879677 M: 07816 570132

E: andrewsale@outlook.com

www.andrewsale.co.uk

computermedicine



Need to get rid of
something nasty?

**It's easy to suffer from a virus, or malware, or ransomware.
Let us clean you up.**

We are local computer experts
who can solve your IT issues
whether at home or business.

Our mission is to get your
computer behaving itself and
keep it that way.

Just some of the services we
provide include:

- Virus & spyware removal
- New PCs
- Bombproof backup
- Home & business support

Tel: 01584 856 774

**info@computermedicine.co.uk
www.computermedicine.co.uk**

Three Shires Eco Clean

We are a husband and wife team operating in the Welsh Borders and surrounding areas. We pride ourselves in our ecological approach to cleaning slippery paths, grubby terraces and clogged gutters, all at affordable prices.

From just £69.00

Professional cleaning of Patios, Paths, Paving, Decking, Driveways, Tennis Courts, Low Walls and Gutters.

For more information or just some friendly advice please call us on 01547 529 298 or Lynn 07505 840 123 or Gaynor 07811 169 676



We also do

Garden Maintenance

Pruning, Weeding, Edging, Grass Cutting and General Tidying.

Call us for a free quotation.



I'm looking for a community volunteer Sub-editor or possibly a youth group to help me continue the newsletter beyond 2019, by assisting with obtaining information and articles for publication and possibly editing future editions as well in part or completely, for which a good knowledge of MS Word 2010 or later would be beneficial though full training can be given. Please contact me if you are interested on 07484 280259 or email beverley2019@gmail.com



CURTAIN CALL

Bespoke Soft Furnishings and Alterations

- Cushions
- Bedspreads
- Fabrics available
- Tracks and poles
- Hand sewn curtains
- Pelmet and headboards
- Roman and London blinds



Eileen Wilson ~ 01588 660752

eil1254@btinternet.com

Bucknell Allotment Association

With the UK due to leave the EU on March 29th, we are hearing that some of our favourite salad items may be missing from the supermarket shelves. Items such as lettuces and tomatoes it appears could be threatened by Brexit and any that do get here will be much more expensive.



However, it doesn't have to be like this, as now is the time to plant your favourite salad crops. All you need are some flowerpots or trays, compost, seeds and water. You could even reuse yoghurt pots or any other plastic containers you may have. Give them a wash and make holes in the bottom. Fill with slightly damp compost, sow your seeds as per the packet instructions and place on a sunny window sill. Soon you could be having fresh produce benefiting from no air miles, no carbon dioxide produced, fresher than Super Fresh, no plastic bags to dispose of and containing no pesticides.

Enjoy!

Jim Hughes - 30th January 2019



The Neighbourhood Watch Scheme has been resurrected by volunteers to help keep our community safe by messaging residents who have signed up to receive alerts. Contact me, the scheme coordinator, if you would like to join the scheme by sending me an email or by telephone:

Email: hughes_jim@msn.com

Tel: 01547 530 077

Mobile: 07980 883 785

Jim Hughes - 30th January 2019

WEST MERCIA POLICE - Bishops Castle & Rural

Your Safer Neighbourhood Team (SNT) are:

- PC 3331 Stuart Coote
- PCSO 6160 Shaun Culliss

See the Bedstone & Bucknell parish website for the latest monthly police newsletter which gives useful information and lists local crimes, or I can email a copy to you if you contact me directly at beverley2019@gmail.com



Emergencies - 999

Non Emergencies - 101

Crime stoppers - 0800 555 111



From the Vicarage ~ Revd. Annie Ballard

Happy Spring Everyone!

Last Sunday in a lovely, lively Baptism Service at St Mary's, I read from St. Paul about the best kind of love from his first letter to the Corinthians. They were always falling out with one another and struggled to work together.

"For now we see as in a mirror, dimly; but then we shall see clearly, face to face.

Now I know in part; then I shall know fully, even as I am fully known." (1Corinthians 13v12)

To understand what Paul means we have to imagine looking through very old glass where light is distorted, or the oldest mirrors made of beaten metal; you would never be able to see a clear image of yourself in them.

Looking out of my window this morning I was reminded of Paul's message and how we have to learn to see things clearly. There was thick fog which lifted slowly, gradually revealing sparse images, which then filled out until; in the late morning sunshine I could see everything clearly.

First I was able to see a beautiful hazy skeleton of a single tree. Only later could I see that it wasn't actually on its own. Then the grey tones began to take on colour providing an illustration of how our vision can expand; we may not see things as they really are, what we see ebbs and flows and hopefully, grows, as our eyes are opened (if we allow it) throughout our lives.

As a child there was an ancient tree in the fields behind our house. It terrified me. Its gnarled old limbs seemed to harbour wizened faces and evil spirit creatures that haunted my dreams. It was many years later when my sight problems were diagnosed and I was given a pair of specs that I began to see the beauty and age in its old whorls and hoary boles and recognised it as a place of hospitality for birds and squirrels that I was then able to befriend that magnificent old tree.

This is why I enjoy working with the rhythm of our Church year so much, as it echoes the natural ebb and flow of light and growth in the world around us. We are about to embark on the season of Lent, which gives us time to reflect and try to work our way through the mists and fog of our lives and allow our sights to become clearer as the time of new births and Easter Resurrection and flourishing arrives.

Through Lent we are having another series of "Times of Reflection" on Wednesday evenings in people's homes around the Benefice. These evenings are a great opportunity to share and listen to one another. The first is on Wednesday 13th March at Melin-y-Grogue, over at Llanfair Waterdine hosted by Graham and Richard. Please let them know if you would like to join us. Everyone welcome. Full details available in the Deanery magazine or from one of your Wardens.

We are having some "specials" in Church over the next few months:

- Ash Wednesday is on 6th March. This year our service with imposition of Ashes will be at St Mary's Bedstone at 7pm.
- Mothering Sunday is on 31st March At 10.30am I will be leading a special Family Time of Worship in St Mary's followed by refreshments. Everyone Welcome!
- Palm Sunday is on 14th April. Beginning at 10.30am we are hoping to have an outdoor procession service, re-enacting the events on that day, hopefully with a donkey! More details nearer the time, but the more the merrier as we process round, and hope the sun will shine!!

- Easter Sunday Communion on 21st April at 11am. will be led by Rev. Dr. John Daniels, Local Ministry Officer from our Diocese.
- For the first time this year we are holding a Single Annual Church Meeting in the Benefice. This will be at St. Cuthbert's in Clungunford on Sunday 28th April beginning at 10.30am. I know it is not the most central but St. Cuthbert's is the most flexible of our buildings enabling us to meet all together and still do some work in individual parish groups. The morning will include worship together as well as sharing vision and business.

Meanwhile, I hope you are enjoying the signs of spring emerging!

With love and prayers, *Annie and Red.*

See page 37 for Annie's contact details in the Who's Who

14th February 2019



After a successful A.G.M. in November, December was party time when the members provided a wonderful spread and we raised our glasses in a toast to our W.I. Unfortunately our entertainment was unable to be with us so we provided our own entertainment with community singing accompanied by the Ukulele group.

Later in the month eighteen of us went out for our Christmas lunch to Mortimer's Cross.

Our first meeting in 2019 was well attended when we had an excellent demonstration on vegetarian cookery given by Sue Greenan. She cooked a wide variety of dishes including Chick Pea Soup, a variety of Curries and other tempting dishes, all of which we enjoyed for our supper finishing off with Vegan Muffins and Ginger cake.

In February we have Stuart Edmund's from the Shropshire Wild Trust giving a talk on Pine Martens as several members showed interest previously and wanted to know more about the Pine Martens. It was decided that this should be an open meeting.

As the Spring passes we look forward to the Summer months with plans for a train trip to Cardiff or Birmingham in June and we have been invited to Carole and Martin Garland's beautiful garden for our July meeting.

We have the S.F.W.I. meeting to attend in Shrewsbury where the speakers will be Lynn Stubbings from the N.F.W.I. and Eran Culiffe from the BBC Prosecutor series and in September the Group meeting which will be held in Clun.

So we have much to look forward to.

Although our membership keeps very much the same we are always ready to welcome new members so if you would like to join us why not come along to one of our monthly meetings as a visitor and who knows you may like to join us.

The third Wednesday in the month at 7:30pm.

Christine Price - WI President - 13th February 2019

FREE PERSONAL ADS

For anyone (non-trade) in the parish that would like to advertise for free. Contact me with a description of what it is you want to advertise via beverley2019@gmail.com or 07484 280259

1	Grazing land required to rent for five quiet horses - Bucknell / Bedstone / Clungunford / Craven Arms area. Please contact Victoria on 01547 530074
2	2016 Sterling Eccles 565 4-berth caravan for sale c/w self-seeking roof-mounted satellite dish, motor movers, 2-bike rack, 100W solar panel, Alde wet central heating, Duvalay twin beds, LED lighting, Alko hitch and wheel lock, full kit of water and waste containers, gas bottles, 240V cable - ready to go, regularly serviced. £19,000 ono. CRIS registered. Call Beverley 07484 280259 to enquire further or view. No trade please.
3	Selling our lovely Edwardian style, dwarf wall, Conservatory as having an extension to the house. UPVC with 10 opening windows, skylight and double, side aspect, outward opening, French doors. Double glazed roof, doors and windows. Colour: Mahogany outside and White inside. Internal size: 5.3m x 2.9m (17' 5" x 9' 6"). Buyer to dismantle and remove. Offers invited. Tel: 01547 530977 to enquire further or view.



AARDVARK BOOKS & CAFÉ

CLOSED:
Easter Sunday
21st April 2019

Saturday 23rd March	11am - 2pm. Spring Music Event - A long overdue return to Aardvark Books by Gareth Rees-Roberts who will be playing a full programme of music from Spain and Latin America. Free entry.
27th March	09:30am. Poetry Breakfast - By Anna Dreda - £8.00 and includes breakfast.
20th April to 6th May	Art Exhibition: 'The Flower Garden' Artists: Sabina Rüber, Ruth Kirkby and Lottie O'Leary.
Saturday 20 th April	10am - 4pm. Easter Garden Event: The Cottage Herbary, Live Music, Gardenalia, Chocolates etc.
26th May	Aardvark May Brocante / Flea Market 10am - 3pm. Lots of stalls to browse, live music and café refreshments! Free entry, free parking, all welcome!
1 st to 16th June	Art Exhibition: 'Out of the Hills 2019' A dozen artists in one great Art Exhibition, curated by Maggie and Kim Davis

Free Entry at:

The Bookery, Manor Farm, Brampton Bryan, Bucknell, Shropshire SY7 0DH

Tel: 01547 530744 Email: aardvaark@btconnect.com

Bookshop and Café: Open: Mon–Fri. 9-5pm, Sat. 10-5pm, Sunday 10am-4pm.

Business Cards



all cats love



**dog kennel lane
cattery**

dog kennel lane, bucknell, shropshire
tel: 01547 530 558 mobile: 07980 487050

cats are housed in insulated
cabins with heated beds and
covered exercise runs.
Individual care and attention is
given to all cats


proprietor: martyn ellis

Welcome to the world of
Restorella
Upholster, Upcycle, Uplift


A world of *Fairytale* endings for furniture





Where the ugly becomes *Beautiful*
The unloved a *treasure*



The plain *Extravagant*
and the everyday simply
Out of this World



 /restorella  /restorella.co.uk

The Old Dairy, West Street, Knighton, Powys, LD7 1DN

CHIROPODIST

Sally Bright D.Pod.M M.Ch.S S.R.Ch
HPC Registered

26 Station Road
Knighton
Powys LD7 1DT

07896 865 562 - (preferred number)
Home - 01588 638345



James Haran

07534 134 740

jamesharan@live.co.uk

15 Ladywell, Bucknell, Shropshire SY7 0AZ

All mechanical work undertaken.
On-site repairs and servicing of mechanical
equipment from garden mowers to tractors
and excavators – domestic and commercial.

HARAN PLANT SERVICES



HAPPYDOGS

DOG GROOMING

UNIT 1
THE STABLE BLOCK
TUFFINS
CRAVEN ARMS
SY7 9QJ

TINA
07974 839 071

For a complete dog grooming service



Curtains By Marilyn

Curtain, blind making,
cushion covers etc. Tailoring
alterations also undertaken

Contact Marilyn Shepherd

Home: 01547530619

Mobile: 07969170299

Email: mal.shepherd@btinternet.com



RGH Car Repairs



All mechanical repairs and diagnostics

Tyres — Batteries — Exhausts

MOT Preparation

Contact Ralph or Neil

Telephone: 01547 530676

The Timber Yard, Bucknell, SY7 0EL

RENTUS

Self Drive Hire

www.powysvansales.co.uk

01547 530174

Cars, Small / Large Vans
Daily, Weekly, Long Term Hire

2 Rose Cottage,
Brampton Bryan, Bucknell,
Shropshire, SY7 0DG



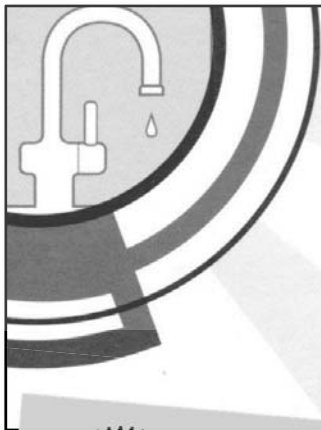
Richard de Meester

All manner of restorations,
re-upholstery and repairs for
home furnishings.

Ground Floor Studio,
The Oil Mill,
Brampton Bryan SY7 0EW

Mobile: 07811 100694

Email: rhdemeister@gmail.com



N.R. Tranter

Plumbing & Heating

2 Rose Cottage
Brampton Bryan
Bucknell SY70DG

07896 643280



PEARCE

CYCLES @ ENGINEERING @ EVENTS

LUDLOW BASED SPECIALIST BIKE SHOP

We offer a vast range of BIKES and ACCESSORIES for TRAIL, DOWNHILL and ROAD RIDING
as well as KIDS' BIKES, BMX, ELECTRIC and HYBRID. HIRE BIKES and TEST BIKES available.

Fishmore Road, Ludlow, SY8 3DP T: 01584 879 288

www.pearcecycles.co.uk



SANTA CRUZ

KINESISUK



ORANGE

NUKEPROOF

LAPIERRE

FORGE HAIR

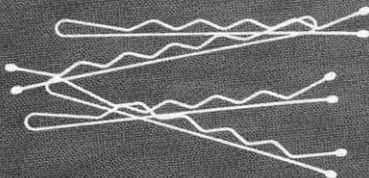
Toll house
Brampton Bryan
Shropshire
SY7 0DH

01547 530622
Open 6 days a week

Forge Hair

WENDY MORRIS

Unisex Hairdressers



Sue's Foot Care



Complete footcare for your overall wellbeing

Treatment of:

- ✓ Corns
- ✓ Sore feet
- ✓ Hard skin
- ✓ Cracked heels
- ✓ Verrucas
- ✓ Fungal nails
- ✓ Athletes foot
- ✓ Ingrown toenails

Sue Kelsall

Foot Health Practitioner

B A Dip CHFP MPS pract.

For home visits call:

07811 042 478

suekelsall.fhp@gmail.com



Find us on Facebook

Mark Williams

Painting & decorating, tiling, general property maintenance work.
Prompt and reliable. I will quote quickly and show up when promised!

M WILLIAMS

mark.williams163@hotmail.com
07950275104

3 Seabridge Meadow
Bucknell, Shropshire.
Please phone or email.



BR & SC GREEN

**Belmont Garage,
Bucknell SY7 0AA**

Petrol & Diesel - Oil - Newspapers

Motor Spares - Confectionery

Phone top-ups - Greetings cards

01547 530252

The Baron at Bucknell

Bar - Restaurant - Rooms



COLLECT & SPEND
LOYALTY POINTS ON
BOOKINGS!

ROOMS AT THE INN!

PLANNING A FAMILY CELEBRATION
AND STRUGGLING FOR BED SPACE
IN YOUR HOME?

LET US TAKE THE STRAIN. OUR
LUXURY B&B ROOMS OFFER THE
PERFECT SOLUTION.



WINE NOT?

WE SERVE A TRULY DELICIOUS ARRAY OF WINES, LOCAL REAL
ALES AND OTHER BEVERAGES...
PERFECT FOR RELAXING AND UNWINDING AFTER A LONG DAY



www.baronatbucknell.co.uk | 01547 530549



Tony Oakley

General Builders

All types of building work undertaken
Re-Roofing - Painting & Decorating - Farm Building Repairs

No job too big or too small

Contact me to discuss your requirements

Tony Oakley, Provident Villa, Bucknell SY7 0AL

01547 530585 or 07814 803915

Email: tonyoakley400@gmail.com



HARLEY ESTATE

WORKSHOPS / STUDIOS / OFFICES / STORAGE

To Let on the Harley Estate

A wide selection of traditional buildings sympathetically converted for office, studio, workshop, retail and storage use. Well served with modern communications and good road access. Rural surroundings with parking and delivery space.

All routine maintenance is carried out by the Estate and leases are flexible with competitive rental prices. The units are let to a diverse selection of businesses ranging from local crafts, such as jewellery, furniture restoration, artists' studios, offices and book shop.

The Estate caters for all sizes of business with square footage ranging from 200 to a potential 16,000 square feet. Cottages are also available.

Please contact Mr. P. Segrott at Balfours on 01588 673314

or contact the Harley Estate office on 01547 530280 or email
estateoffice@harleyestate.co.uk or visit the website www.harleyestate.co.uk.

RGN BSc Foot health Spec. MAFHP



**Dishley Foot Health
Footcare Home Visiting
Service**

Call: 07816 988 196

anitaharvey02@gmail.com

www.dishleyfoothealth.vpweb.co.uk



HOME HEATING OIL

WWW.DEAKINSFUELS.CO.UK

Prompt, Reliable and Local

01588 660166

Who's Who



Bucknell Memorial Hall Chair: Nicky Edwards - 07973 563829 Vice Chair: Roger Bates - 01547 530062 Treasurer: Dorothy Edwards - 01547 530252 Bookings: Eddie & Christine Price - 01547 530249
Bucknell Women's Institute President: Christine Price - 01547 530249 Secretary / Treasurer: Beryl Starr - 01547 530179
Bucknell and Bedstone Good Neighbours and Community Cars Chair: Mike Starr - 01547 530179 Secretary: Dave Baker - 01547 530495 Coordinators: Sue Fairclough - 01547 530279 and Sue Percival - 01547 530040
The Sitwell Arms Helen and Steve - 01547 530213
Coxall Baptist Church Minister: Revd. Kevin Dare - 01547 529707 Administrator: Susan Wilson - 07866 833294
Bucknell Walkers Mike Starr (01547 530179) and Website: http://www.bucknellshropshire.com/walking-group
St. Mary's Church, Bucknell - part of The Middle Marches Benefice for Bedstone, Bucknell, Chapel Lawn, Clungunford, Hopton Castle, Llanfair Waterdine, and Stowe. Vicar: Revd. Annie Ballard - 01547 530030 Please leave a message and I will get back to you ASAP or email me at: revannie.middlemarches@gmail.com Bucknell Churchwardens: Jean Pryke 01547 540376 and Jenny White
Bedstone and Bucknell Parish Council Chair : Jonathan Kemp - 01547 530398 Vice Chair : Ian Owen - 01547 530616 Clerk : Nancy Adams - 01686 671126 BUCKNELL: Councillors: Duncan Cullimore, Carol Davies, William Davies, Nicola Edwards. (Plus one vacancy) BEDSTONE: Councillor: Chris Savery. (Plus one vacancy)
Bucknell Nurseries Andrew & Nick Coull - 01547 530606

Bedstone Art Group Celia Keane - 01547 530397
Bedstone Craft Group Anita Lewis - 07870 219599
Lance Phillips Quality Butchers 01547 530233
Bucknell Post Office Klaus Steffes - 01547 530201
Bucknell Stores Sam Smith - 01547 530834
Bucknell Youth Club Juliet Earp - 07377 405632
Bucknell Allotment Association Chair: Nigel Perrigo - 07860 682368 Secretary: Jim Hughes - 01547 530077 Treasurer: Kate Fraser - 01547 529304
Belmont Garage (Greens) Dorothy Edwards and Shirley Moorhouse 01547 530252
Community First Responders Nicky Edwards - 07973 563829 Ian Owen - 01547 530616
Clun Valley AED Scheme (Defibrillator) Ian Owen - 01547 530616
The Baron At Bucknell Debra and Phil Wright - 01547 530549 info@baronatbucknell.co.uk
St. Mary's Primary School, Bucknell Head Teacher: Anna Cook - 01547 530264 Website: not currently available
SJ & Co. Creative Stacie Jones - Graphic designer info@sjconsultancy.co.uk
Mothers Union Jean Pryke - 01547 540376
RGH Car Repairs Ralph Harris - 01547 530676
Member of Parliament for Ludlow Phillip Dunne MP - 01584 872187 Email: philip.dunne.mp@parliament.uk
Shropshire Council - Clun Division Councillor: Nigel Hartin - 07583 962292

The Bucknell Newsletter

A small team of volunteers look after the interests of the Bucknell Newsletter.

- Chair Peter Barron - 01547 530206
- Treasurer and Editor Beverley Stone - 07484 280259 (Voicemail available)
- Distribution A band of loyal volunteer helpers - thank you.

The deadline for inclusion can vary so please contact me ASAP for details.

To contribute, please send news, articles, events, relevant photographs, stories, other items of interest or advertisement enquiries to: **beverley2019@gmail.com**

A COMMUNITY PROJECT RUN SOLELY BY VOLUNTEERS FOR THE BENEFIT OF OTHERS

ADVERTISING

Many thanks go to the local businesses that support us by advertising within this newsletter, for without their support publication could not continue. If you would like to advertise, please contact Beverley at the above email address or by telephone on 07484 280259.

Current advertisement prices per quarterly edition: *

Rear cover page £40.00 colour on 150 gsm paper.

Full page b/w = £25.00 or £35.00 colour.

Half page b/w = £15.00 or £25.00 colour.

Quarter page b/w = £8.00 or £10.00 colour.

Small 1/8th page b/w = £5.00 or £6.00 colour.

NB: All advertisement sizes are approximate. Advertisers may request a specific page for their **colour** advertisement at no additional cost, e.g. page 2, centre-fold, penultimate page, back page, subject to availability and adequate notification.

* Payment by cash, cheque, or BACS is required prior to printing - details are available on request. Invoices will be sent out approximately 6-8 weeks before publication.

Our thanks also go to James Sherratt of **Craven Design & Print** for printing our newsletters. He can be contacted on **01588 673 972** or by email to **info@cravendesignandprint.co.uk**



DISCLAIMER

Whilst every effort is made to include all advertisements, articles, and comments sent in from contributors for this publication, we as a community group cannot accept any liability for the accuracy or legality of the material being donated, so that responsibility remains solely with the contributor, and if the material is published, it is done so entirely at the contributors own risk.

We reserve the right however to not include donated material that we know to be unsuitable or inappropriate, where we have insufficient editorial space, or for any other reason and our decision will be final.



*Looking for self-catering accomodation in Bucknell
for friends and family at great rates?*

Please call Paul on 07971 206 239 or email paulmathews@outlook.com for further information



craven design and print

Quality Graphic Design

Quality Digital & Litho Printing

Quality Greeting Card Printing

for the best **quality** around call ...

Unit 1, Craven Arms Business Park, SY7 8NR

Tel: 01588 673972 Fax: 01588 673844 email: info@cravendesignandprint.co.uk

website: www.cravendesignandprint.co.uk



Proud to be printing and supporting the Bucknell Newsletter

Lucton School



EDUCATION

... at its best!



Day, boarding and flexi-boarding. School buses serving:
Shropshire, Herefordshire, Worcestershire & Powys

Tel: 01568 782000 • Email: admissions@luctonschool.org

www.luctonschool.org

